

Hālau of 'Ōiwi Art



**PROPOSED HAWAIIAN CULTURAL CENTER
FOR OUR COMMUNITY AND THE WORLD**

PE'EPE'E IN WAILUKU, MAUI





Our Vision

INTRODUCTION

Hālau of 'Ōiwi Art (HOA) will be dedicated to the study, practice, celebration and perpetuation of Hula and various 'ōiwi arts connected to Hula.

GOAL

To create a center for the community through the mana'o of our islands' kumu and hālau Hula that will advance the cultural, social, and historical impact of Native Hawaiian 'Ōiwi Art and practices. Through these efforts, we can empower all people in Hawai'i and the world to keep these traditions alive for future generations.



Hālau of 'Ōiwi Art is a collaboration between diverse groups of Maui hālau Hula, representing the breadth of Maui's Hula Lineages, with the support of the County of Maui.

HOA will be in support of the **Huamakahikina Declaration**, ratified by an international coalition of Kumu Hula and adopted by resolution by the Maui County Council on November 5, 2021. It will be the first of its kind and the largest investment by any county or the state to establish a permanent place for Hula and associated 'ōiwi arts.

Challenges with Access and Resourcing

There are challenges to engaging in the study and practice of Hula for a significant portion of the people of Hawai'i, most importantly Kānaka Maoli, due to a scarcity of resources and significant gaps and disparities in how Hula is recognized, treated, provisioned, housed, funded, and otherwise supported by local County and State governments. The result is that Hula is too often financially and/or geographically inaccessible.



SCARCITY OF RESOURCES



FINANCIALLY INACCESSIBLE



GEOGRAPHICALLY INACCESSIBLE



Why Wailuku?

P.U.M.A. conducted a 2017 Market Profile for the Wailuku Redevelopment Area to help inform the Civic Hub programming and found:

Demand to expand art & cultural offerings

- Since 2010 Wailuku Town has seen growth in the arts and cultural cluster and is projected to continue to grow.
- MAPA plans to construct a new black box theatre in Wailuku Town.
- Demand for additional offerings continue to grow this niche that will serve both locals and visitors.



Wailuku Redevelopment Plan

*The Economic Revitalization
of Maui County's Civic Center*

Prepared by

*Maui County
Planning
Department*

Prepared for

*Maui
Redevelopment
Agency*

February 2000

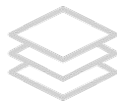


From the Wailuku Redevelopment Plan February 2000, page 20 – 21

VISION OF WAILUKU TOWN (excerpt):

Wailuku's commercial core will have an abundance of life, color and variety that reflect the Town's history and culture. The Town will be alive with local music, hula, arts and crafts.

Project Highlights



2-levels

Two-level facility, approx. 47,000 sq. ft.

Commercial spaces available for lease (specific uses to be determined).



Education

Dance studios, learning and event spaces centered around education and 'ōiwi arts, celebration and perpetuation of Hula and Hawaiian culture.

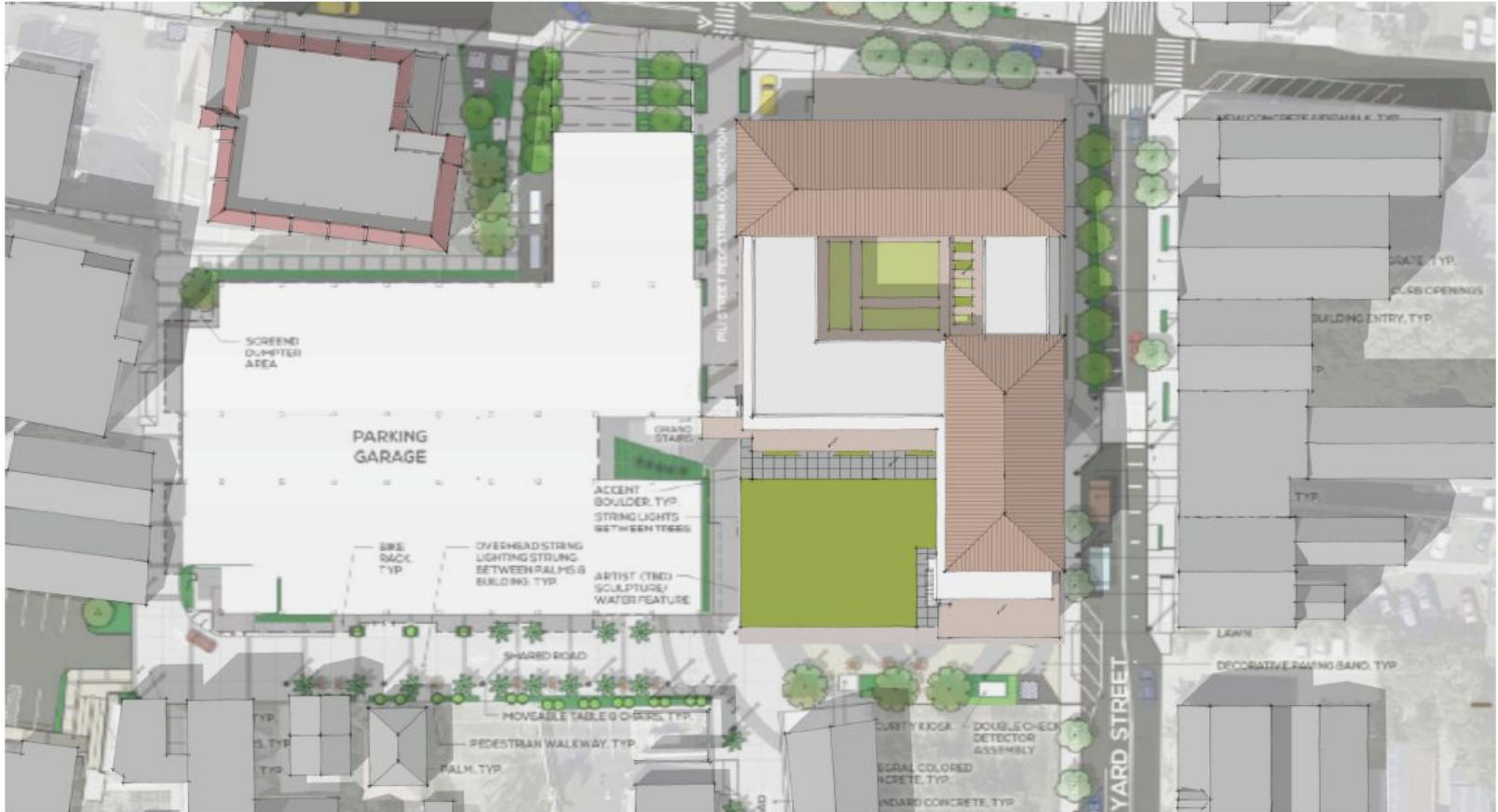


Flexible

A number of spaces within this facility also available for the community to utilize AND not just for Hula.

Facility will be an event and shelter space, as well as a resiliency and recovery center.

CONCEPTUAL SITE PLAN



CONCEPTUAL BUILDING AERIAL



PREVIOUS PHASE 2 DESIGN



HOA FROM CHURCH STREET

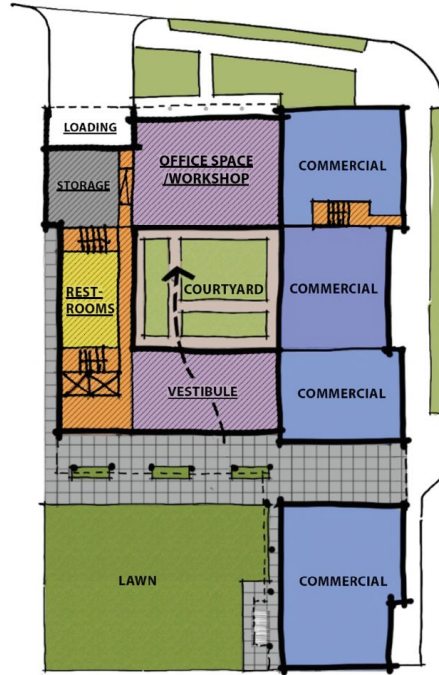


Preliminary Space Analysis

FACILITY SIZE BREAKDOWN

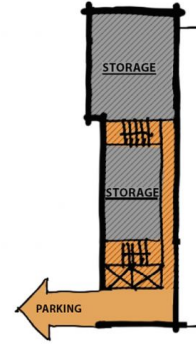
- Level 1 – 18,000 sq. ft.
- Level 1B – 3,000 sq. ft.
- Level 2 – 18,000 sq. ft.
- Level 2 Lanais – 5,000 sq. ft.

Gross sq. ft. calculations shown above.
Subject to change.

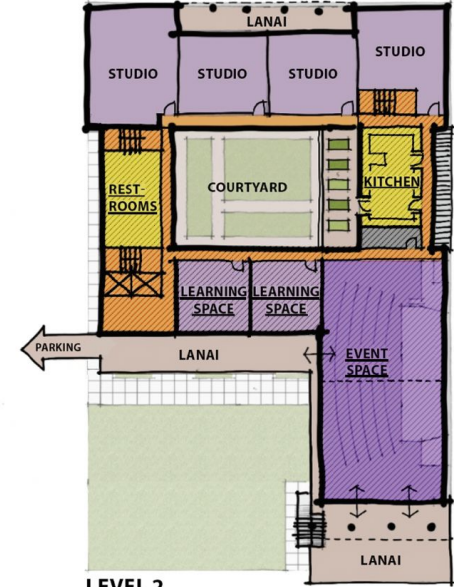


LEVEL 1A

COMMERCIAL SPACES = +/- 10,000 SF
OFFICE SPACE/WORKSHOP = 2,700 SF
LAWN AREA = +/- 6,000 SF



LEVEL 1B



LEVEL 2

LEARNING SPACES = +/- 1,800 SF
STUDIO SPACES = +/- 5,800 SF
EVENT SPACE = +/- 5,000 SF
LANAI AREAS = +/- 5,000 SF

NOTE: HATCHED AREA REPRESENTS THE ENHANCED HURRICANE PROTECTION PORTION OF THE BUILDING.



Opportunities to utilize HOA

There are a number of areas that the community can utilize:

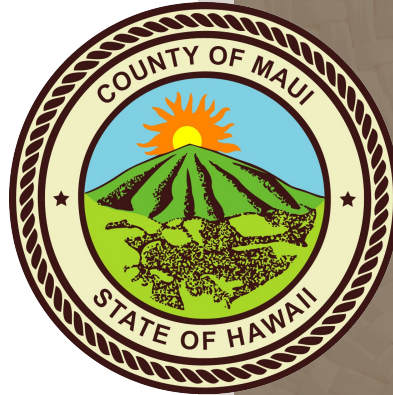
- ✓ KITCHEN
- ✓ DANCE-FOCUSED SPACES
- ✓ LIBRARY/EXHIBIT
- ✓ WET ARTS/WORKSHOP
- ✓ EVENT SPACES
- ✓ MEETING SPACES
- ✓ LANAI

Management

LEASE AGREEMENTS + COMMUNITY

The County of Maui is considering a lease of the facility to the non-profit partner representing the Kumu Hula.

This partner would be responsible for overall operations and programming of the facility, including the ground floor commercial spaces intended as a locally grown business incubator.



Partnership
representing
the Kumu Hula

HOA Operations



Finance

- Fundraising
- Grant Compliance
- Contract Management
- Retail Lease
- Financial Forecasting and Budgeting
- Accounts Receivable
- Accounts Payable
- Purchasing



Maintenance

- Lifecycle Planning
- Janitorial Services
- Event Support
- Landscaping
- Facility Certification
- Environmental/Health Compliance
- Technical Support



Program

- Storage Allocation and Coordination
- Workshop Programming and Coordination
- Publicity/Marketing



Security

- Special Event Security
- Monitoring
- Coordination with Clean & Safe Program



Event

- Vendor Coordination
- Booking/Scheduling
- Event Coordination
- Logistics Support

Preliminary Project Timeline

In 2022

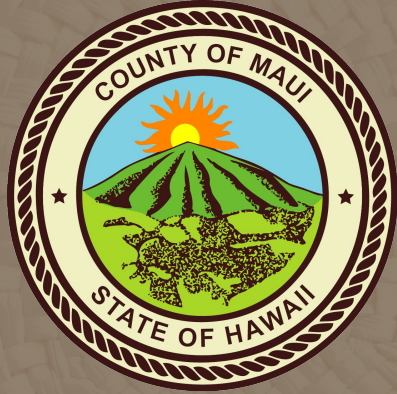
- **Planning / Environmental Assessment**
- **Community Engagement**
- **Council Engagement**
- **Facility Design**

2023

- **Permitting**
- **Bidding / Contract**

2024 + Beyond

- **Construction**
- **Execution of a Grant/ Lease Agreement**
- **Completion**



Decision Making and Engagement

Maui County Council

- Funding - Spring 2022
- Facility Management - Summer 2025

Maui Redevelopment Agency

- Facility Design - July 2022 to May 2023
- Host Environmental Assessment Public Hearing



How can I stay informed?

Below are a few ways you stay informed:

OUR WEBSITE
hoamaui.com

FOLLOW US
Facebook & Instagram
[@hoamaui](https://www.instagram.com/hoamaui)



MAHALO

To learn more, visit: HOAmaui.com

Also follow us on FB and IG